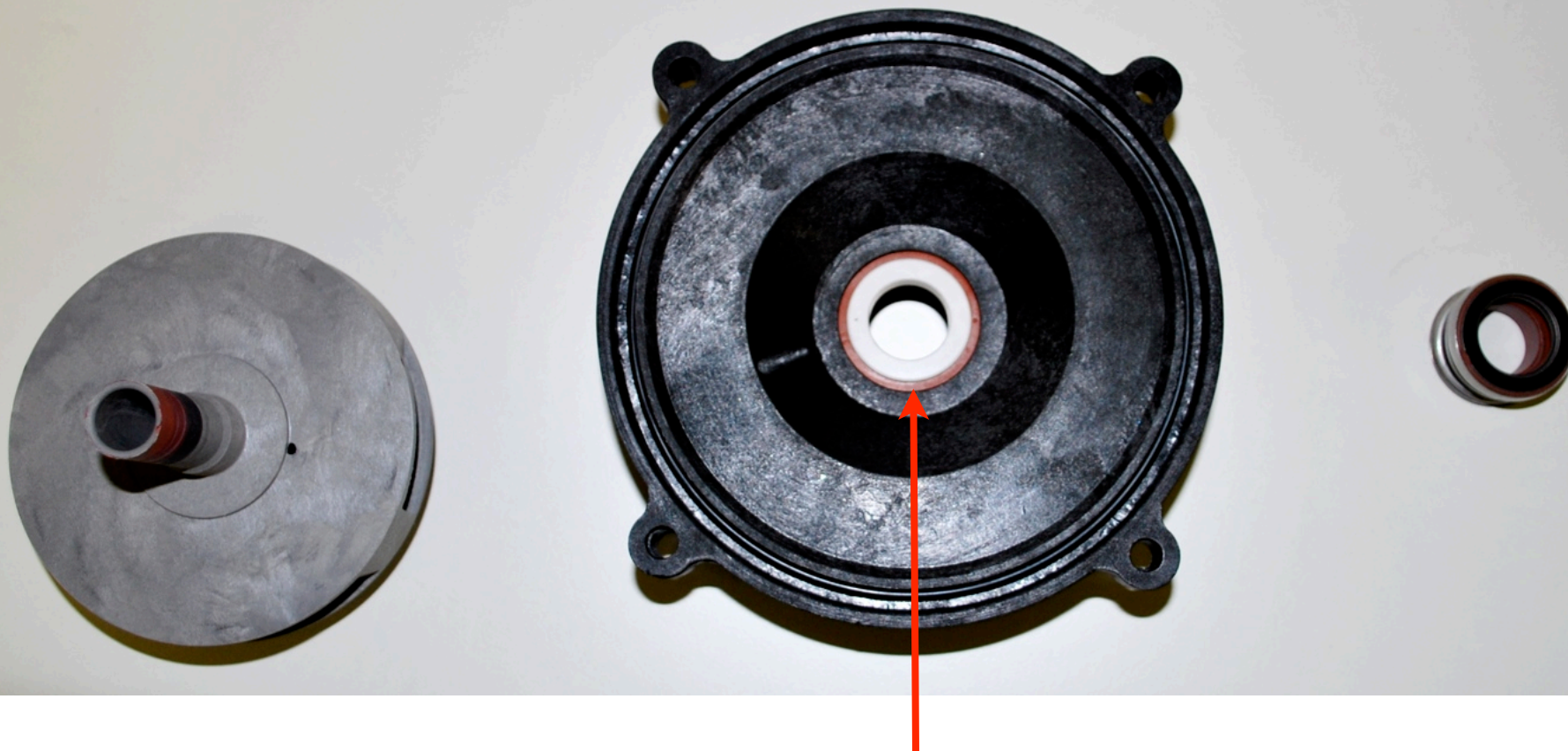


Installing Seal



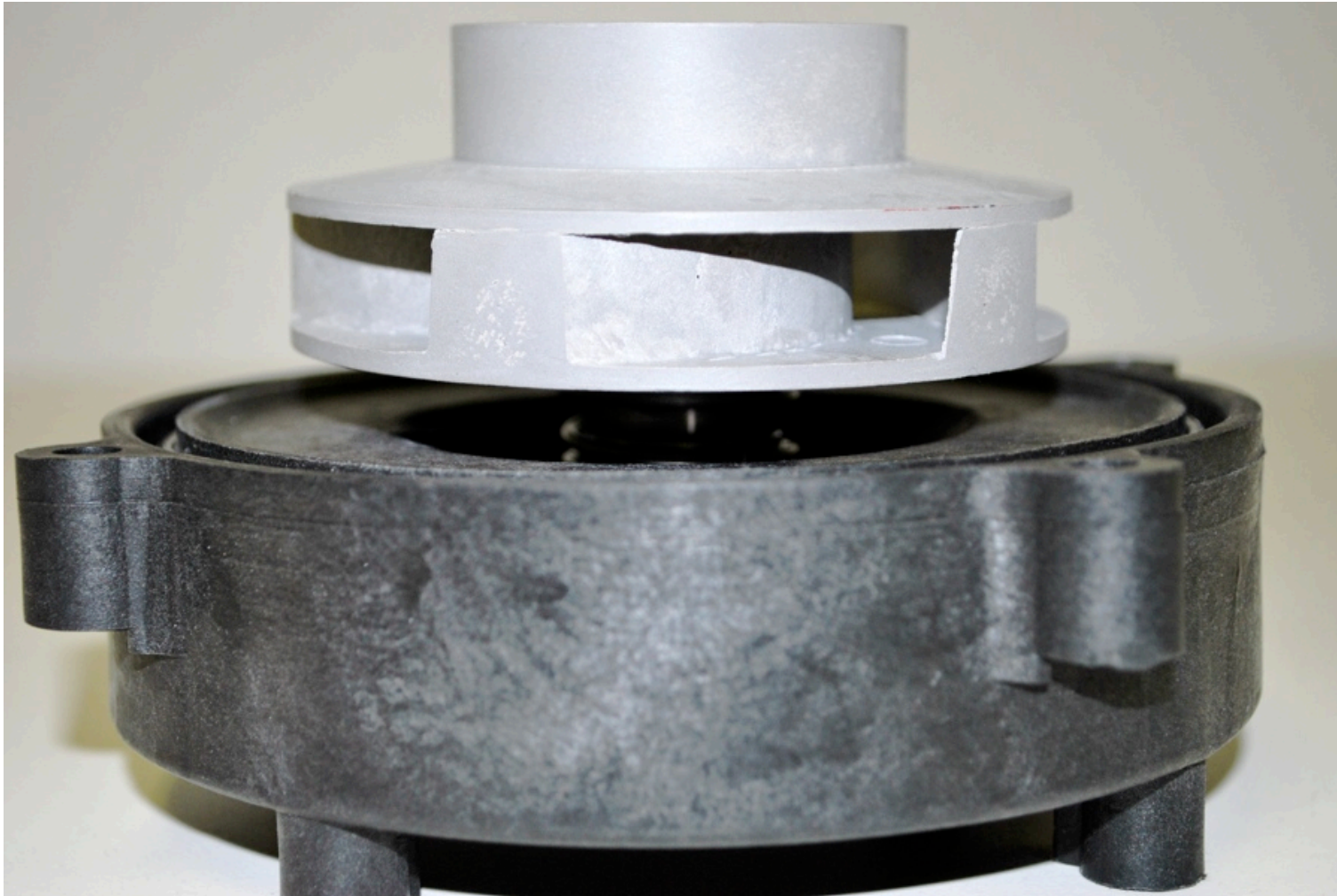
1. The seal has 2 parts. a- White/Rubber part goes in recess on back of Wetend. b- Silver Spring slides on to shaft of Impeller.



2. Press part a of Seal into recess of black WETEND firmly to accomplish good seal.



3. Slide part b (spring) of seal onto shaft of impeller. Black ring facing up and make sure part is slid all the way on impeller shaft.



4. Place Impeller back in Wetend Housing. Install Wetend back onto Motor. That's it!