



## COVER SLIDE-IT INSTALLATION INSTRUCTIONS

1. Remove and verify that all parts are present according to the Cover Slide-It Parts and Hardware Chart.

**\*\*\*For replacement, missing, or special order parts call COVER VALET 1-800-730-7727 or (001) (562) 283-0595.\*\*\***

### Step 2-4 Pre-Assembly:

2. Screw threaded Fingers (csCC) into Extension Arms (csBB). The second set of Fingers (csCC) should thread in the opposite direction of the first, this will create a left and right side.
3. Slide the rubber sleeves (csC) and (csD) over Fingers (csCC) and Stabilizer Bar (csDD) respectively.
4. Place your spa cover so that it is centered over your spa.

- 
5. Align the Cover Slide-It brackets (csAR, csAL) so that **all 3** of the following apply:
    - A. They rest flat along the side of the spa cabinet (hardware should be facing towards the spa).
    - B. With the brackets slid fully forward, the back of the Cover Slide-It brackets (csAR, csAL) should be 8" (20.32cm) in from the rear of the spa. (Picture 1)
    - C. Make sure the top of the Cover Slide-It brackets (csAA, csAAL) do not touch the spa shell or anything else that might hang over the side of the spa.



Picture 1 -8"-  
20.32cm

7. Mark and pre-drill the 6 holes where you will be mounting the Cover Slide-It brackets.

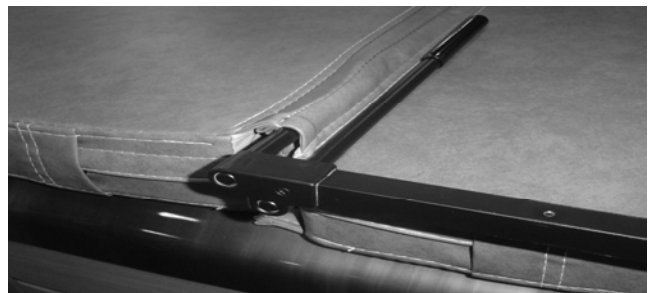
**\*\*\*Pre-drilling all holes is advised\*\*\***

8. Mount the Cover Slide-it brackets (csAL, csAR) to the spa cabinet using 6 lag screws (csA) on each side.
9. Slip the seam of the spa cover between the Fingers (csCC) with the Extension Arms (csDD) pointing towards the Pivot Arms (csEE). The "end" forks should rest under the spa cover, while the "high" forks should rest on top of the spa cover. The "knuckle" of the extension is also pointing up. (Picture 2 CORRECT "knuckle up").

**----Caution, it is possible to install the forks WRONG. Doing so will cause excessive stress on the seam and could damage the spa, spa cover and/or Cover Slide-It and VOID ALL WARRANTIES. (Picture 3 WRONG "knuckle down").**



Picture 2 CORRECT (knuckle up)



Picture 3 WRONG (knuckle down)

10. Align the Extension Arms (csBB) so that they will slide into the Pivot Arms (csEE). Slowly and evenly slide them together until the spa cover is centered back over the spa again. (fig. 4)
11. Make sure the Cover Slide-It Brackets (csAL, csAR) have not slid back and are in the full forward position before moving on. Securely fasten the Stabilizer Bars (csDD) **and** the Extension Arms (csBB) to the Pivot Arms (csEE) with the Small Hex Bolts (csB). Tighten just enough so that the Extension Arms (csBB) will no longer slip in and out of the Pivot Arms (csEE) and the Stabilizer Bars (csDD) will not spin. (Picture 4) **-CAUTION: DO NOT OVERTIGHTEN-**
12. Attach (if not already done) the Chain Lock (csE) to either Cover Slide-It bracket (csAL or csAR). There is a small hole on the bottom (towards the back) of the Cover Slide-It Brackets (csAL or csAR). Attach to the side that you will be opening and closing the spa cover from most often.



Picture 4

## COVER SLIDE-IT MAINTENANCE INSTRUCTIONS

The Cover Slide-It was designed for a specific use. The Cover Slide-It is not designed to BEND, WARP, or to be ABUSE PROOF. **Do not stand, sit, lie on, or permit heavy weight to rest on the Cover Slide-It.** Do not clean with abrasives, solvents, or strong detergents. Most of the hardware has been Zinc coated for durability, but will deteriorate quicker when exposed to high levels of Chlorine, Bromine, Ozone, or other active chemicals. Check nuts and bolts often and tighten if necessary. Any parts showing evidence of wear should be replaced immediately.

Caution must be used when operating the Cover Slide-It in order to maintain its function and longevity. The maintenance and use instructions are provided to prevent damage to the Cover Slide-It. Damage caused by the failure to follow the maintenance and use instructions will not be covered by the manufacturer's warranty.

## COVER SLIDE-IT USE INSTRUCTIONS

How to **OPEN** your spa cover using the Cover Slide-It:

1. Fold spa cover onto itself.
2. From the front or rear of the spa, fully slide the spa cover and Cover Slide-It back towards the rear of the spa.
4. Lift the spa cover and Cover Slide-It into an upright position.
5. Lock the Cover Slide-It into place using the chain lock.



How to **CLOSE** your spa cover using the Cover Slide-It:

1. Remove the chain lock from the Cover Slide-It.
2. Guide the Cover Slide-It and spa cover down onto the spa slowly. **NEVER** allow the spa cover to fall onto the spa shell unassisted, as it can cause damage to your Cover Slide-It, spa, and/or spa cover!
3. Unfold the spa cover and slide the spa cover and Cover Slide-It until the spa cover is centered over the spa.
4. Lock the Cover Slide-It using the chain lock.

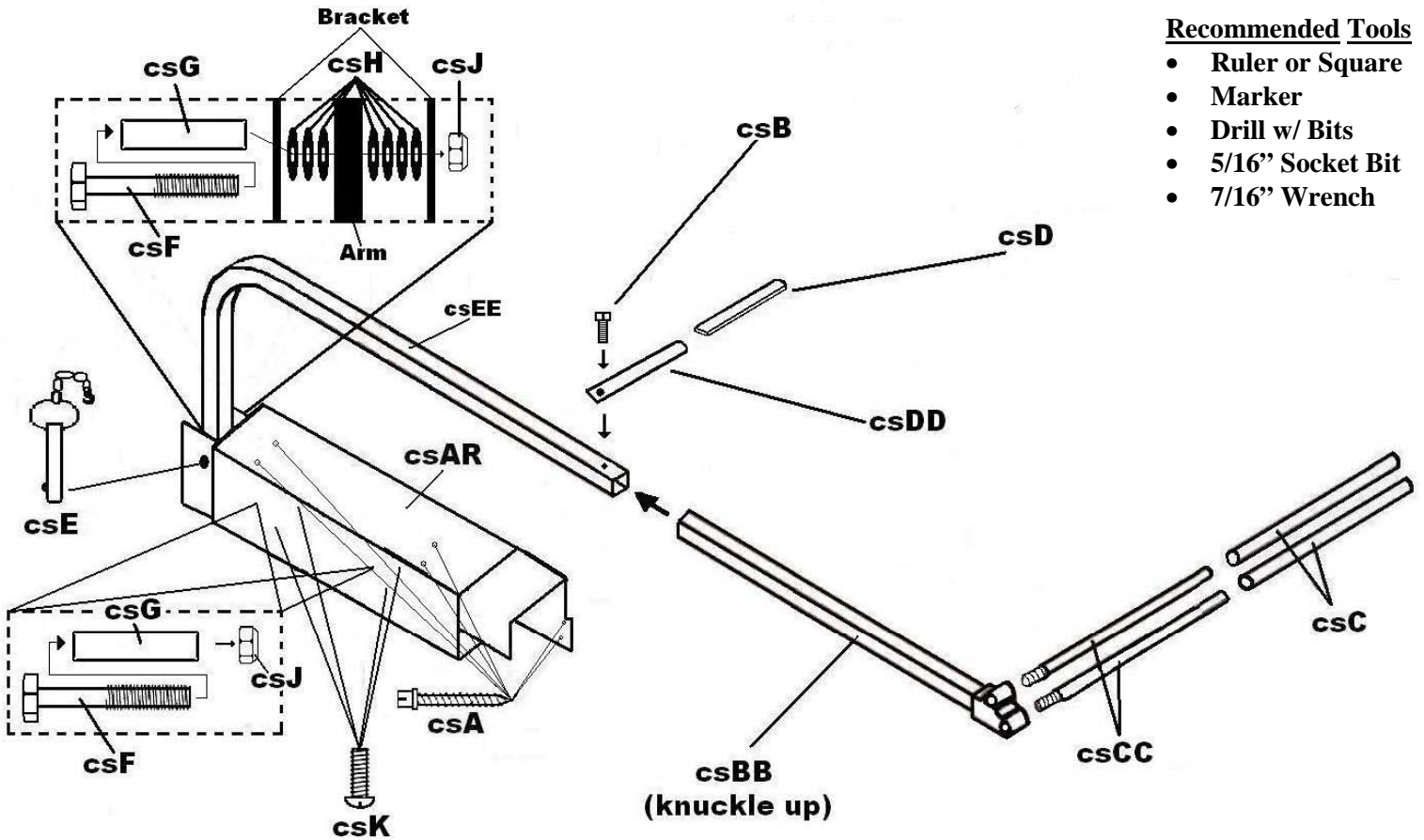
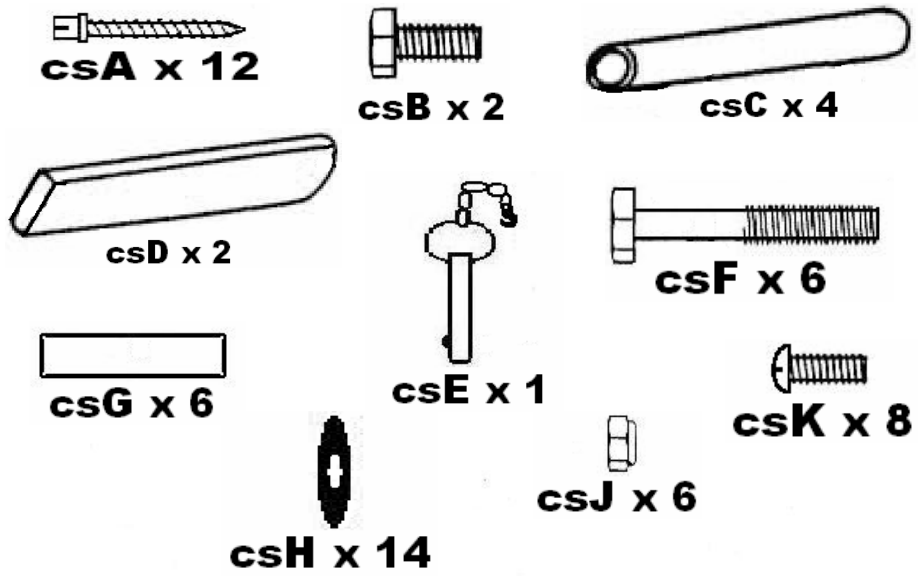


**NEVER LEAVE AN UNCOVERED HOT TUB OR SPA UNATTENDED.  
NEVER LEAVE A COVERED HOT TUB OR SPA UNLOCKED.**

## COVER SLIDE-IT PARTS & HARDWARE CHART

Name	Quantity	Part Description
csAL	1	Slide-It Bracket (left)
csAR	1	Slide-It Bracket (right)
csBB	2	Extension Arms
csCC	4	Fingers
csDD	2	Stabilizer Bars
csEE	2	Pivot Arms

Name	Quantity	Hardware Description
csA	12	Lag Screws
csB	2	Small Hex Bolts
csC	4	Finger Sleeves
csD	2	Stabilizer Bar Sleeves
csE	1	Chain Lock
csF	6	Large Hex Bolts
csG	6	Rolling Bars
csH	14	Plastic Washers
csJ	6	Lock Nuts
csK	8	Phillips Bolt



### Recommended Tools

- Ruler or Square
- Marker
- Drill w/ Bits
- 5/16" Socket Bit
- 7/16" Wrench



COVER SLIDE-IT WARRANTY REGISTRATION FORM

Complete and return within (10) days. Please type or print clearly. Incomplete and/or unreadable forms may not be registered.

Owners Name:
Address:
Phone Number:
E-Mail Address:
Date of Purchase: Dealer's Name:
How did you hear about us?
1. Dealer
2. Showroom Display
3. Friend
4. Home Show
5. Magazine
6. T.V.
7. Other
8. Internet (website)

For more information, Please contact us at: Cover Valet 1-800-730-7727
1621 East Spring Street. (001) (562) 283-0595
Long Beach, CA. 90806 USA Questions@covervalet.com
Visit us at WWW.CoverValet.com

California Home Spas, INC.

Cover Slide-It 5-Year Limited Warranty

1. Any Cover Slide-It shown to be unserviceable due to defects in materials or workmanship within 5 years from the date of purchase will be repaired or replaced at the option of California Home Spas, INC, without charge for labor or materials. (This excludes the cost of freight to and from the manufacturer).

EXCLUSIONS:

- A. This warranty does not cover damage incurred by the use of the Cover Slide-It and/or the spa cover, other than in accordance with the printed literature provided by California Home Spas, INC.
B. Defects in components of any part, which are not part of the Cover Slide-It.
C. Misuse, abuse, negligence, accident, or alterations other than authorized by California Home Spas, INC.
D. Normal fading and minor deterioration caused by exposure to the sun, rain, chemicals or environmental factors.
E. Use of solvents, abrasive cleaners or brushes, and strong detergents.

\*\*\*\*\* Except as expressly provided, there shall be no additional warranty obligation expressed or implied oral or statutory. \*\*\*\*\*

ADDITIONS:

- A. California Home Spas, INC. shall not be liable for consequential damages or incidental expenses resulting from any breach of the before mentioned warranties.
B. This warranty gives you specific legal rights and you may have other rights which can vary in different states and countries.
C. Any dispute between the Buyer and California Home Spas, INC. pertaining to this warranty may, at the option of the Buyer, be resolved in California according to the rules of the American Arbitration Association.
D. Should any one or more of the terms, provisions, covenants, or conditions of this warranty be determined void, invalid, illegal, or unlawful in any respect, then it shall be so, however it will not affect any of the other terms or provisions of this warranty and the remainder hereof shall still be effective.